

Quick Start Guide



Of Household HD IP Cameras V 2.1

More information can be downloaded at www.ipcam.xin

This manual applies to our household series IP cameras.

Please download the correct product CD information at www.ipcam.xin before operating the camera.

Recommended operating the IP camera according to the content below.

Content

1. About camera	3
2. Connect camera	3
3. View via mobile phone	6
4. View via PC	7
5. Set WIFI	9
6. Set Micro SD card records	9
7. Reboot and restore factory setting	11
8. More info	12

1.About camera

1.1 Product introduction.

This is a digital HD IP camera for monitoring. It connects to the Internet to send and receive data, and you can use it to remotely view real-time images from your mobile phone, computer or other device anytime and anywhere, it can save surveillance videos in the Micro SD card, computer or other device such as an NVR, The camera also supports alarm functions such as sending alarm emails, alarming cell phone message push and other functions.

1.2 Product should contain:

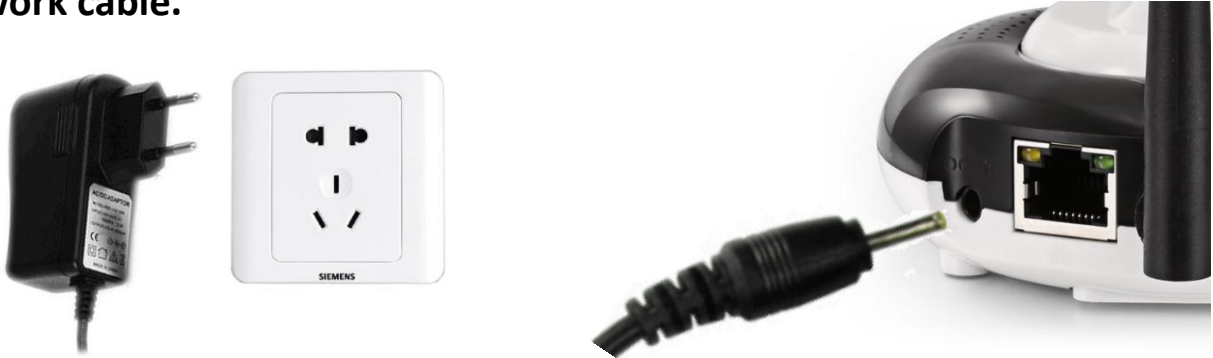
IP Camera*1	Power adapter*1
User manual*1	Network cable*1
Bracket*1	Screws bag*1

1.2 Interface.



2. Connect camera

2.1 Plug in power adapter and connect to camera, you can not connect the network cable.



If you use a network cable to connect the camera to the router (The router must be able to connect to the Internet), you can jump directly to “3. View via mobile phone”.

2.2 Camera will self test for one minute, then insistently give out the "ding-ding-ding..." sound.



If you don't hear “ding-ding-ding...” sound, please reset the camera until hear the sound.

2.3 Download “CamHi” from Google Play Store / Apple App Store or scan the QR code below to get APP information.

Quick Start Guide

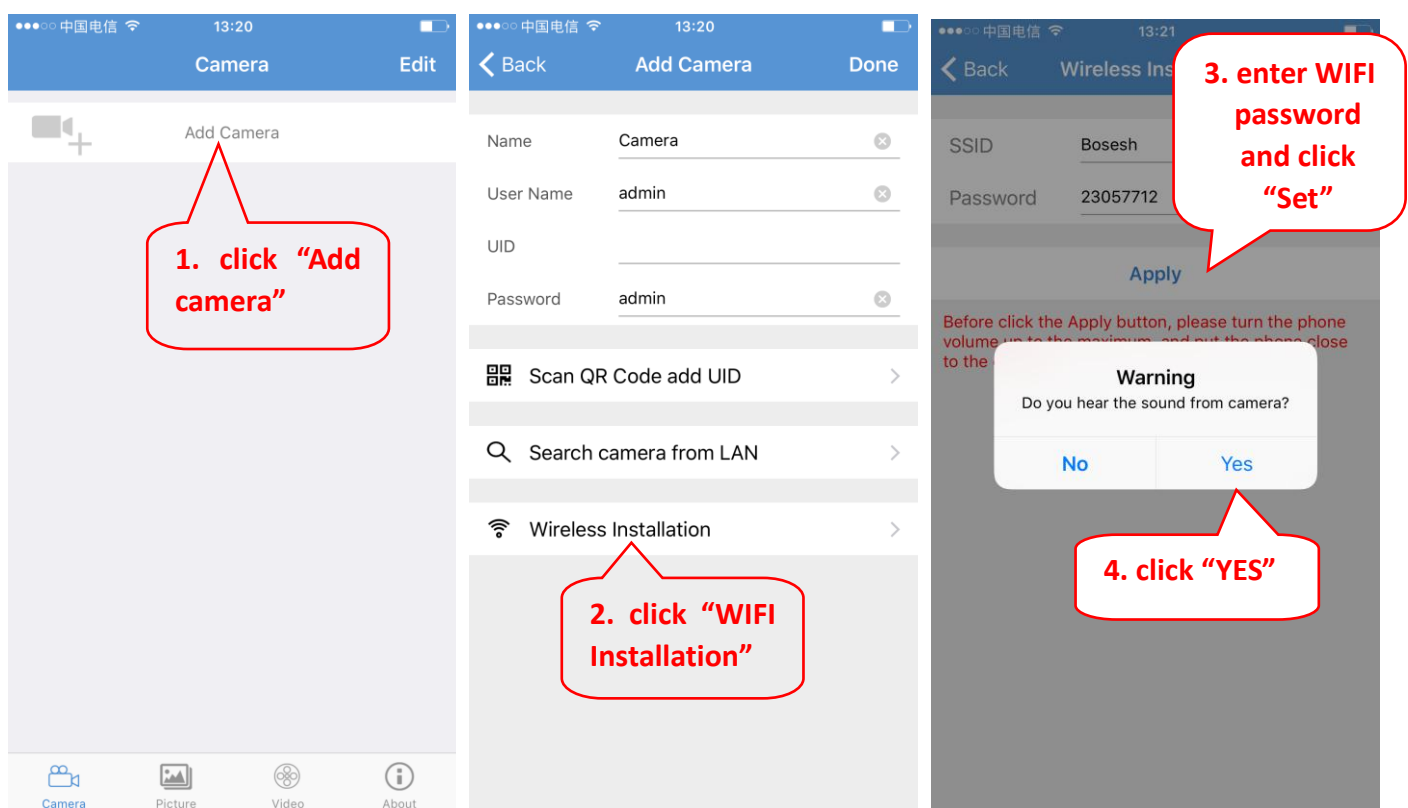


Android



IOS

2.4 Run APP and configure the WIFI of camera then follow the steps below.



Make sure your phone is connected to WIFI and can connect to the internet.

Your WIFI name must be english and can not contain special characters.

Quick Start Guide

Before click the Apply button, please turn the phone volume to the maximum.

Wait for connecting

Cancel

5. wait until camera WIFI connection completed

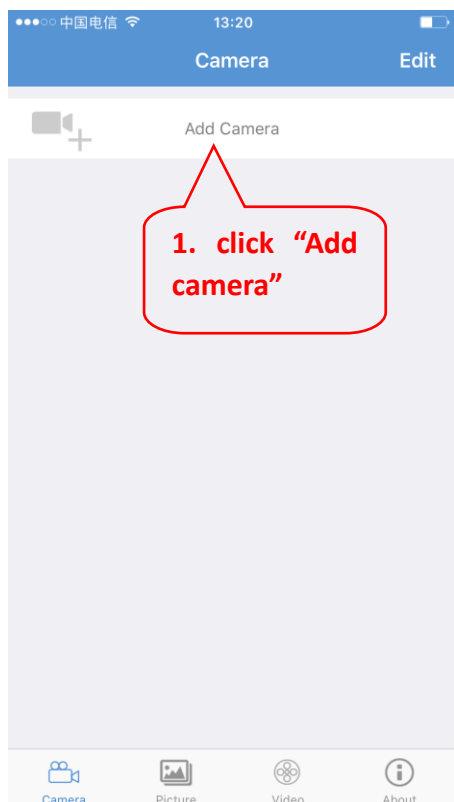


Dong—

When the camera sends a “Dong—” tone, it means that the camera is connected to your WIFI, and the operation will jump to “3. View via mobile phone” step 3 of 3.1.

3. View via mobile phone

3.1 Run APP then follow the steps below.



Name Camera

User Name admin

UID

Password admin

Scan QR Code add UID

Search camera from LAN

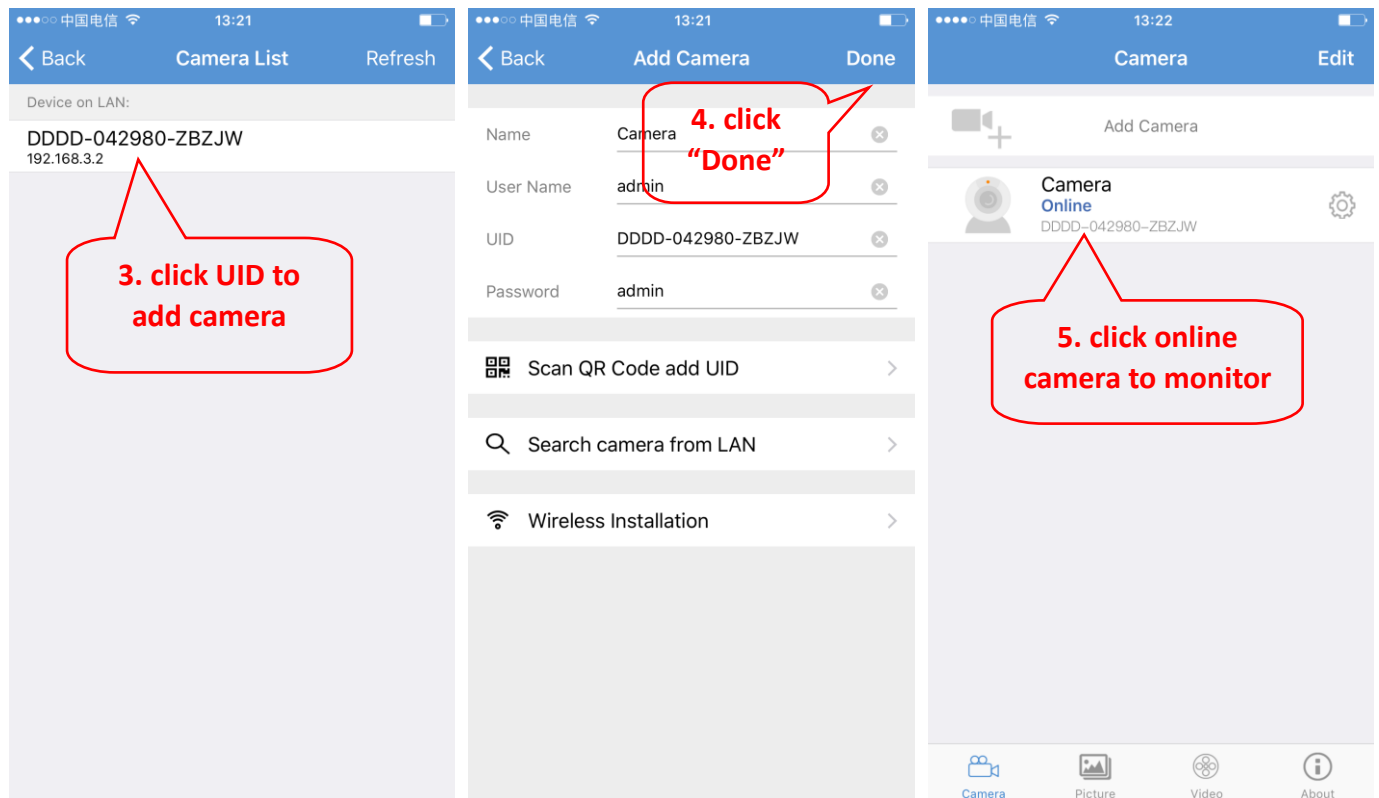
Wireless Installation

2. Click here to Search camera

And you can quickly enter the UID by scanning the QR code on the camera's label, as shown below



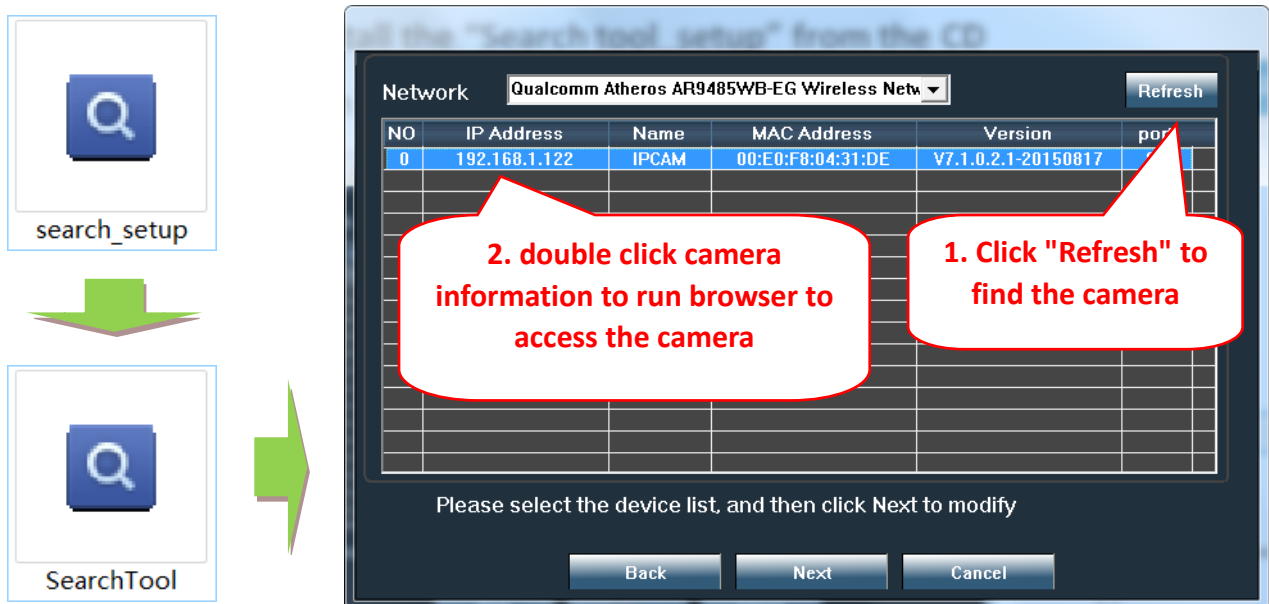
Quick Start Guide



Detailed instructions for CamHI are available in the CD.

4. View via PC

4.1 Install the "Search tool" from the CD, then run it to find the cameras.



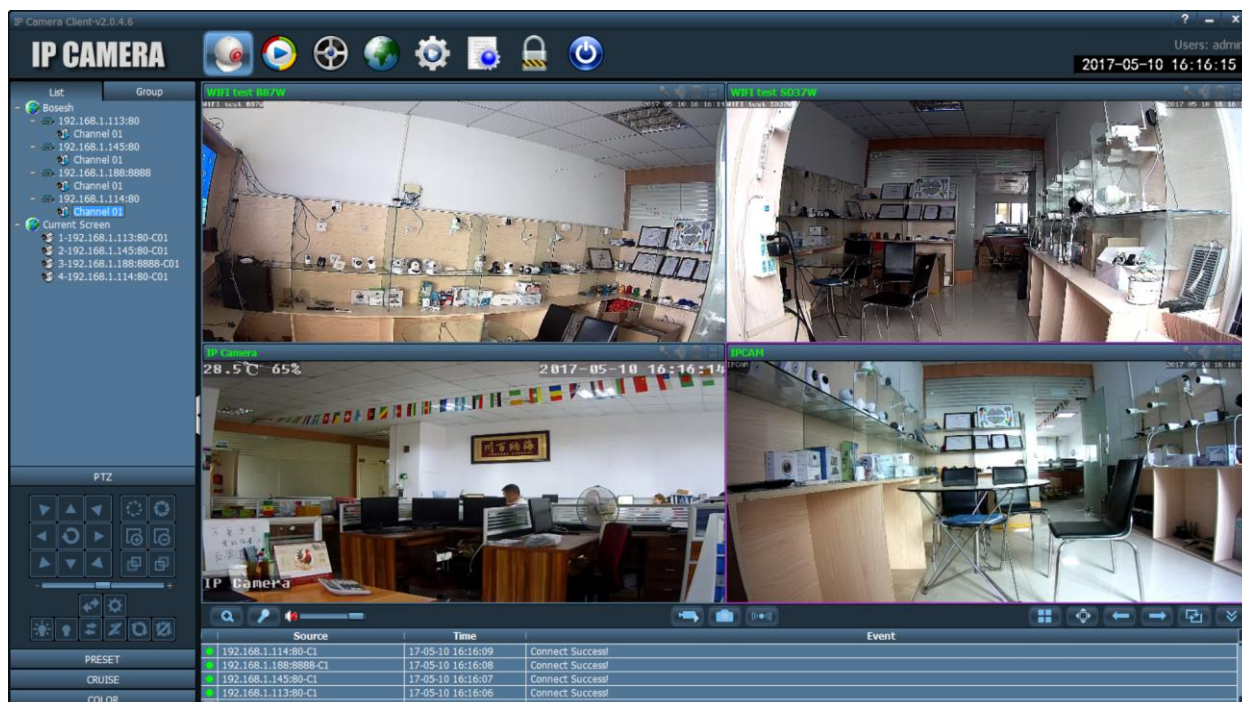
4.2 Access to the camera through browser on windows PC.

Quick Start Guide



In browser you can view image and configure all parameters of camera.
if you do not use IE browser some settings will be missing.

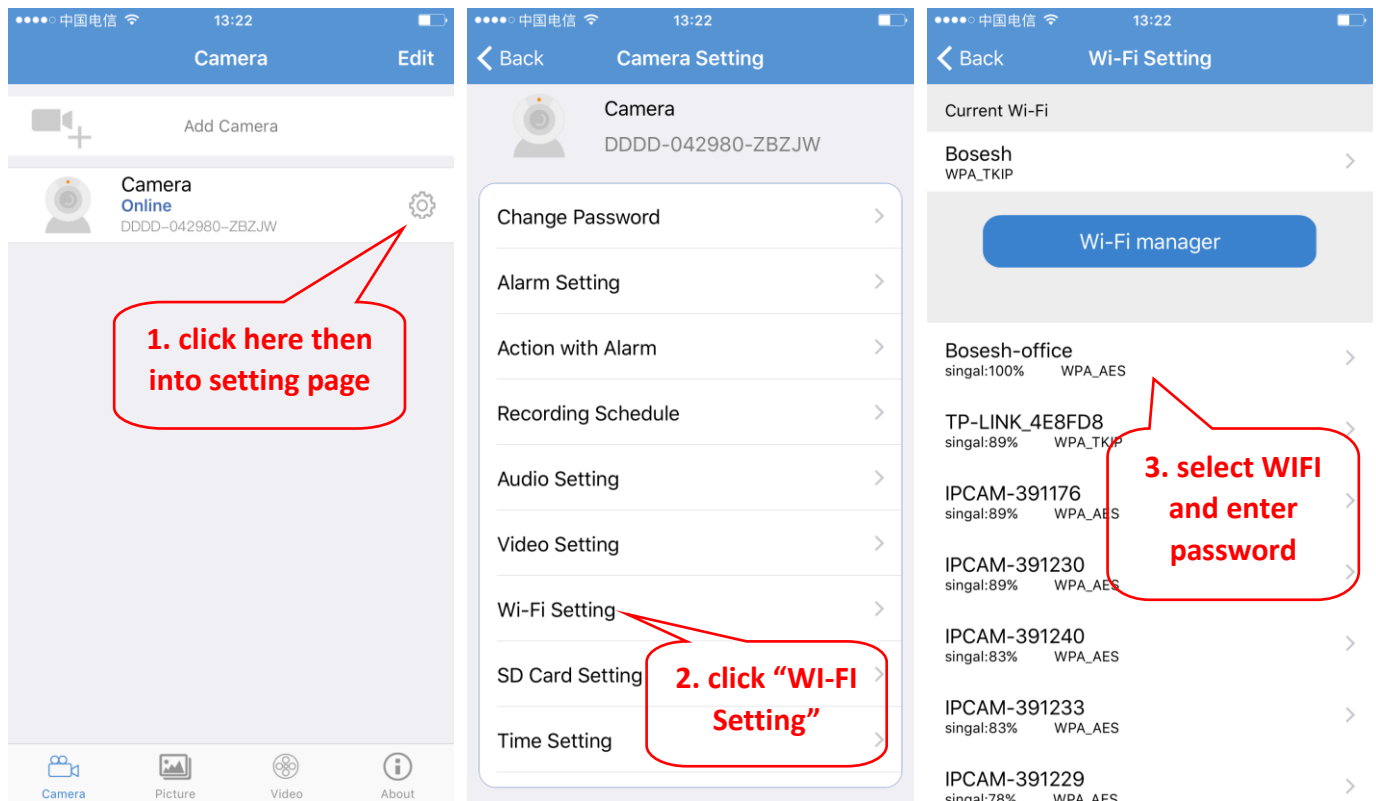
4.3 Connect and manage the multiple cameras via CMS on windows PC!



CMS installation packages and instructions are available in the CD.

5. Set WIFI

5.1 Set WIFI on phone.



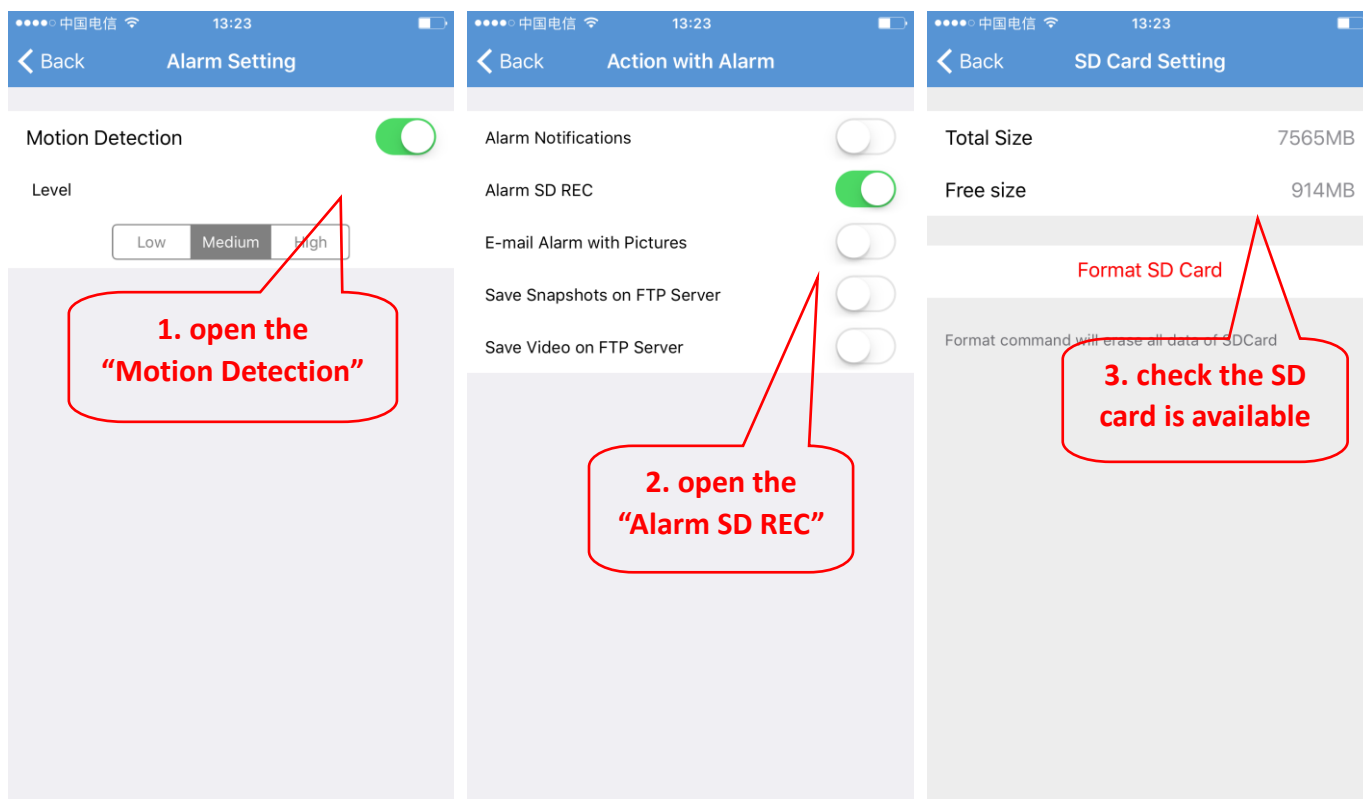
WIFI name must be english and can not contain special characters.

After the WIFI setting, if the camera is not connected to the network cable, it will automatically switch to WIFI connection.

6. Set Micro SD card record

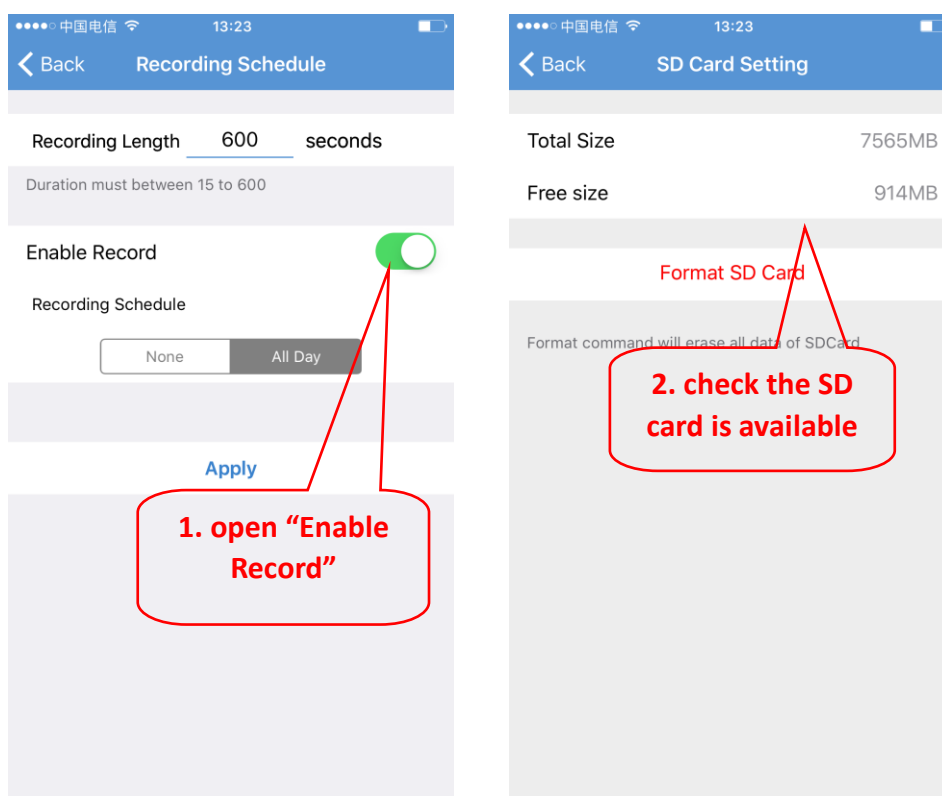
6.1 Set motion detection alarm recording on the phone.

Quick Start Guide

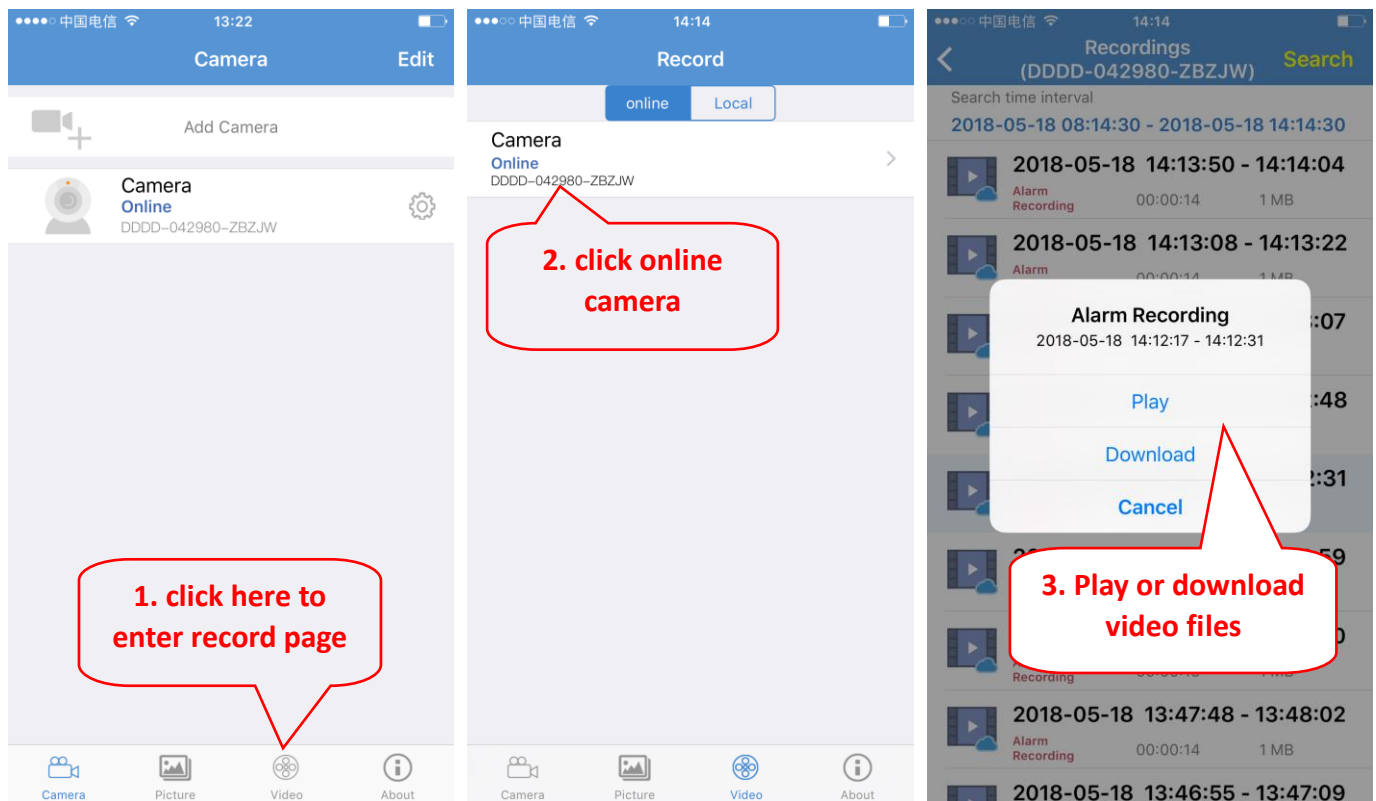


Motion detection alarm recording is recommended when the memory of Micro SD card is small.

6.2 Set schedule recording on phone.



6.3 Playback record on phone.



These parameters can be set in more detail via IE browser on the PC!

7. Reboot and restore factory settings

7.1 Reconnect the power to restart the camera.



7.2 Press and hold the reset button for 5 seconds and the camera will restore

to factory settings.



Reset Button



Reset Button

Also you can restart or reset the camera via mobile phone or PC.

8. More info

This manual is to help customers to know and use the camera quickly, For detailed instructions and video tutorials please refer to the content of CD information at www.ipcam.xin.

This manual may have descriptions and operations that do not match the product, If you have any questions or need technical support Please feel free to contact us or our dealers.